

Product Name :Electronic Components / Switches / Micro switch / MPU-1
Product Code : MPU-1



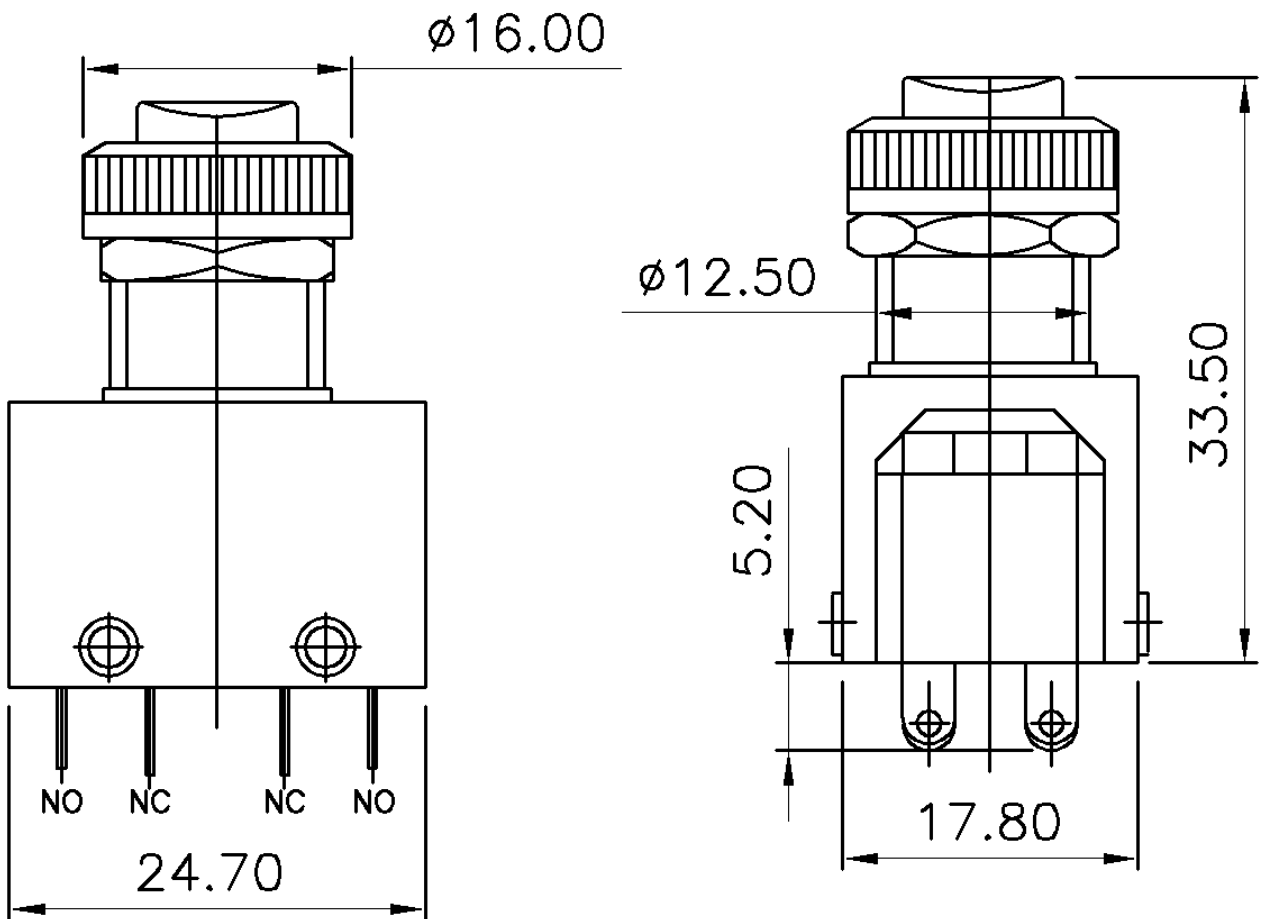
Approvals



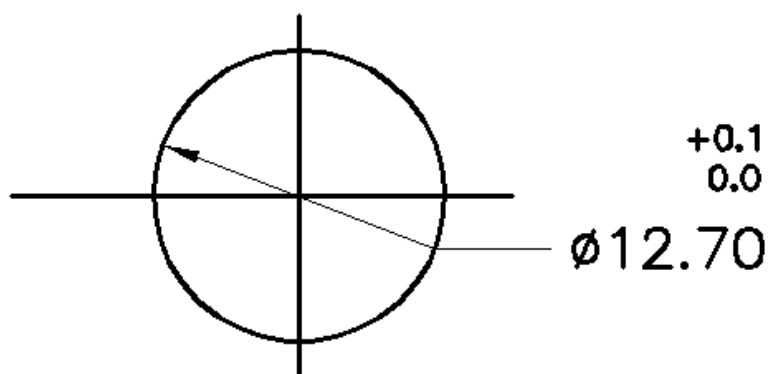
Features

Gold plated elements also available.
Various customized printing options available.
Range available with various customized mounting accessories.

BASIC DIMENSIONS



PANEL CUTOUT



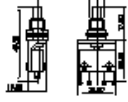
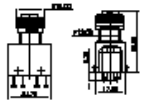
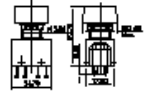


Specifications

Sr.No	Parameter		Specification
1	Product Category / Description		Micro Switch
2	Mounting Style		Chassis, Screw / PCB Type
3	Sub Type		Unshrouded Cap
4	Pole / Throw Type		Momentary
5	Electrical Configuration		NO - NC
	Electrical Characteristics		
6	V/A Rating		4A 250V AC
7	Insulation Resistance at 500 VDC		100 M ohms Min.
8	H.V.Break Down Test (For 1-Minute)		1 KVAC
9	Contact Resistance (Initial)		20 m ohms Max
10	Electrical Life		10,000 Cycles Min.
11	Mechanical Life		50,000 Cycles
	Operating / Functional Characteristics		
12	Operating Temp. Range	With/Without Load	-20°C to +85°C
13	For Soldering		270° C, 5 seconds max.
14	Mounting Style		Screw - Type
15	Terminals (Standard)		Solder Type
	Material		
16	Body		Nylon / PBT
17	RoHS compliant		No (Variety Available Through another code)
18	Colour (Standard)	Colour	Black
19	Current Carrying Parts	(b) Contacts, Terminals	Cu Alloy, Tin & / Or Silver Plating
20	Knob Colour		Grey, Black, Red, Blue, Yellow, Green, White
	Reference Standards / Safety Approvals		
21	Reference Standard		IEC-61058-1
22	CE Marking		Yes

ANNEXURE A

Standard Variety				
Sr.no.	With Reference To	Available option	RoHS/Non RoHS	Safety Approvals & / Or Markings
1	Plastic Resin	Nylon	Non RoHS	—
2	Knob Colour	Black/Red/Blue/Yellow, Green/White		
3	Rating	4A		

Other Customized Options Available On Request, Subject To MOQ & Commercial Acceptance.				
Sr.no.	With Reference To	Available option	RoHS/Non RoHS	Safety Approvals & / Or Markings
4	Variety			—
5	Variety	PMS-1 (Pin Actuated) 	—	—
6	Variety	MPU (Unshrouded cap) A. MPU-1 (1NO-NC) B. MPU-2 (2NO-NC) 	—	—
7	Variety	MPS (Shrouded cap) A. MPS-1 (1NO-NC) B. MPS-2 (2NO-NC) 	—	—
8	Plating On Current Carrying Parts	Silver/Gold	—	—